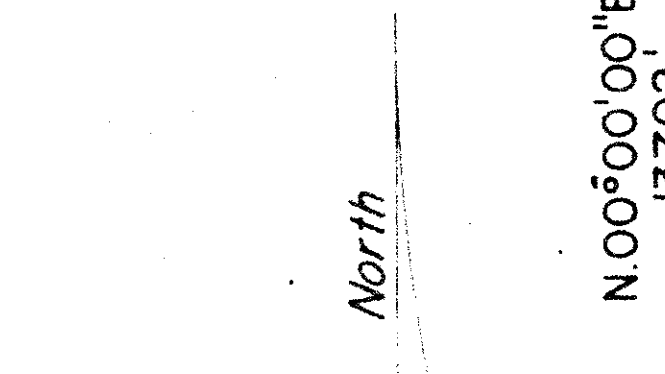


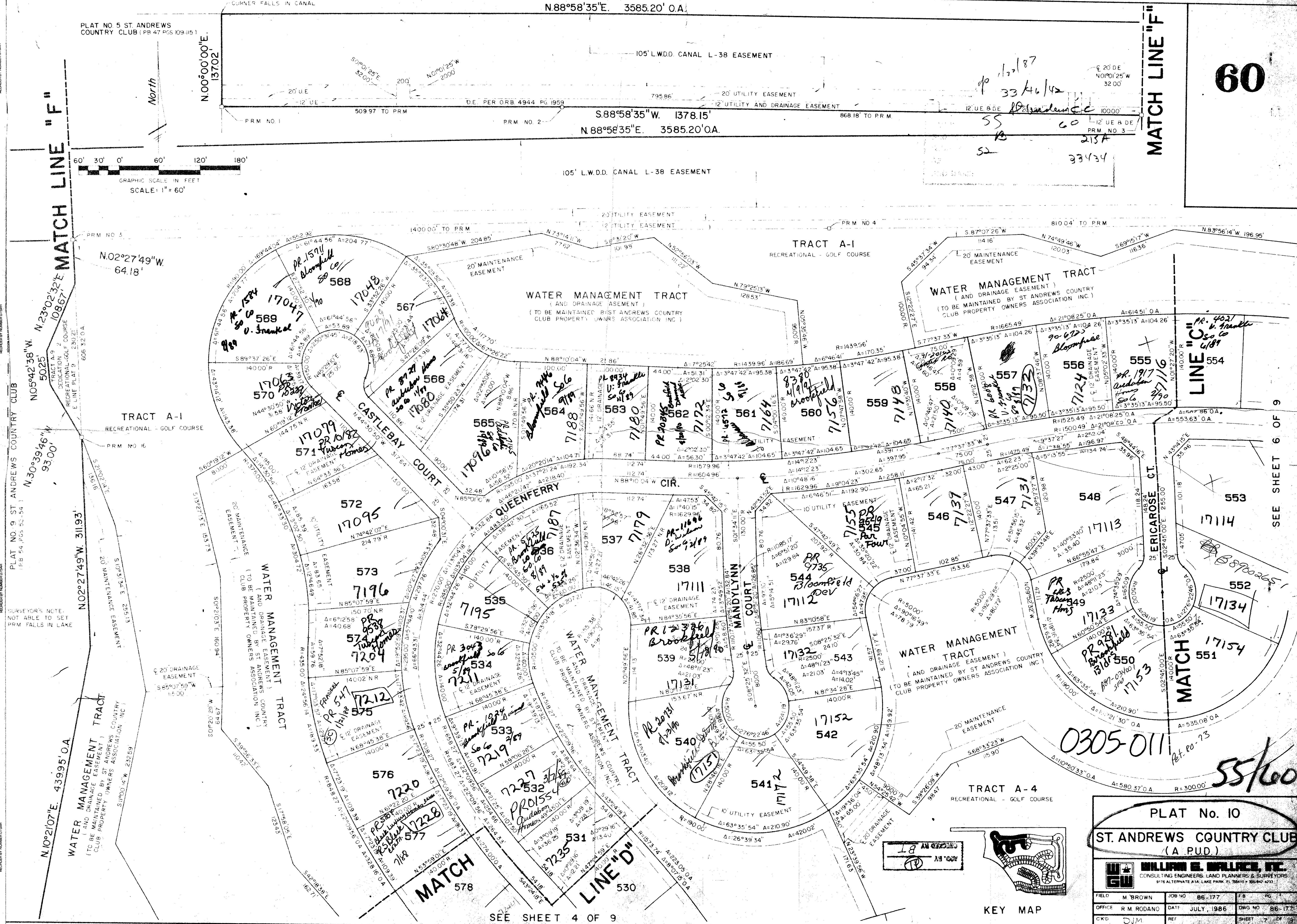
PLAT NO 5 ST. ANDREWS COUNTRY CLUB (PR 47 PGS 109-115)



DRAWING NUMBER

DRAWING NUMBER

DRAWING NUMBER



MATCH LINE "F"

MATCH LINE "F"

MATCH LINE "D"

PLAT No. 10  
ST. ANDREWS COUNTRY CLUB  
(A PUD.)

**WILLIAM E. WALLACE, INC.**  
CONSULTING ENGINEERS, LAND PLANNERS & SURVEYORS  
9176 ALTERNATE A/LA LAKE PARK, FL 33540 • 352-842-4233

FIELD	M. BROWN	JOB NO	86-177	FS	PG 7
OFFICE	R. M. RODANO	DATE	JULY, 1986	DWG NO	86-177
CKD	DJM	REF		SHEET	7 OF

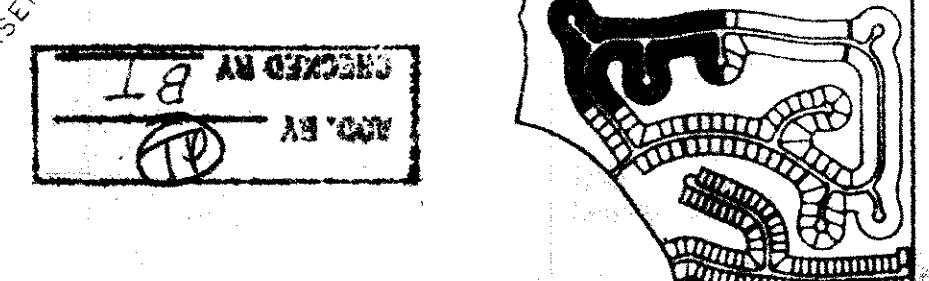
Handwritten notes: 1/2/87, 33/4/82, 215A, 33/3/84

Handwritten notes: 0305-011, Ret. 80-73, 55/60

SEE SHEET 6 OF 9

SEE SHEET 4 OF 9

KEY MAP



PLAT NO. 9 ST. ANDREWS COUNTRY CLUB (PB 54 PGS 52-54)

SURVEYOR'S NOTE: NOT ABLE TO SET PRM FALLS IN LAKE

PLAT NO. 5 ST. ANDREWS COUNTRY CLUB (PR 47 PGS 109-115)

PLAT NO. 9 ST. ANDREWS COUNTRY CLUB (PB 54 PGS 52-54)

PLAT NO. 5 ST. ANDREWS COUNTRY CLUB (PR 47 PGS 109-115)